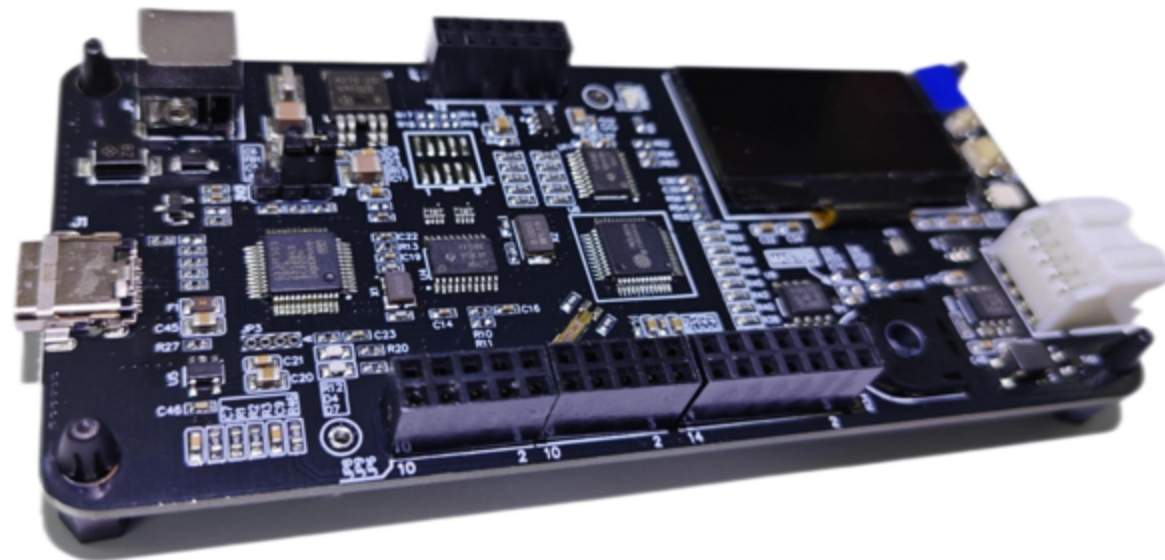


FM33LG0x5A AutoEVB UM

FOR FM33LG025A



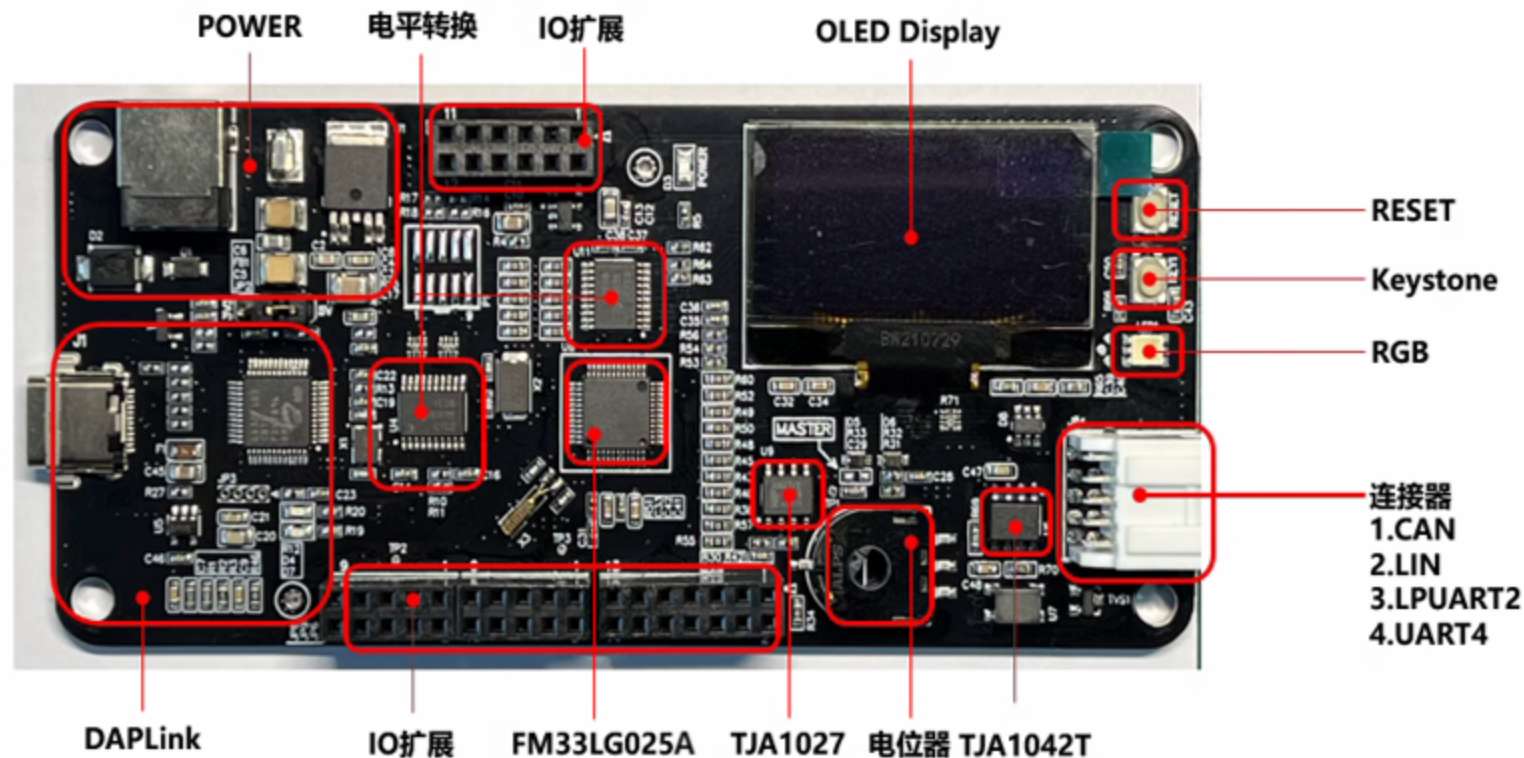
上海复旦微电子集团股份有限公司
Shanghai Fudan Microelectronics Group Company Limited

FM33LG0x5A AutoEVB Main Features

FM33LG025A AutoEVB 是基于FM33LG025A车规芯片的开发平台。

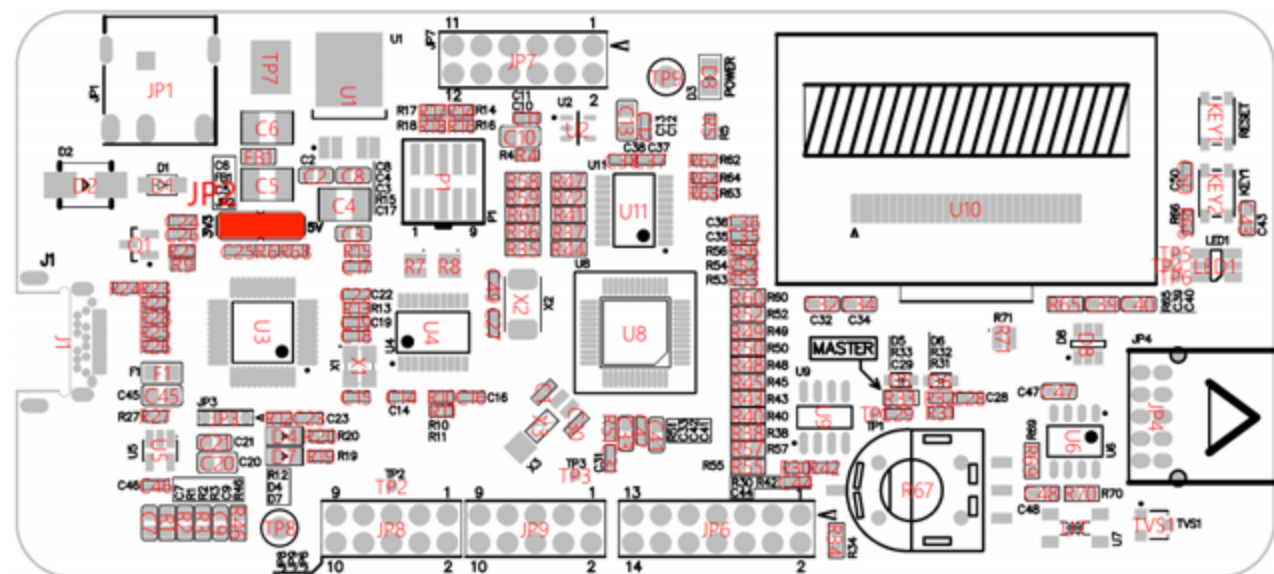
功能包括了所有MCUI/O, CAN总线, Lin总线, 1个用户按键, 一个复位按键, 一个电位器, RGB (PWM), 一个OLED显示屏。

通过外部12VDC供电, 板载DAPLink, 可通过跳线帽切换DAPLink电压 3.3V/5V。



跳线帽配置

REFERENCE	POSITION	DESCRIPTION
JP2	1-3	DAPLink电平选择 5V/3.3V

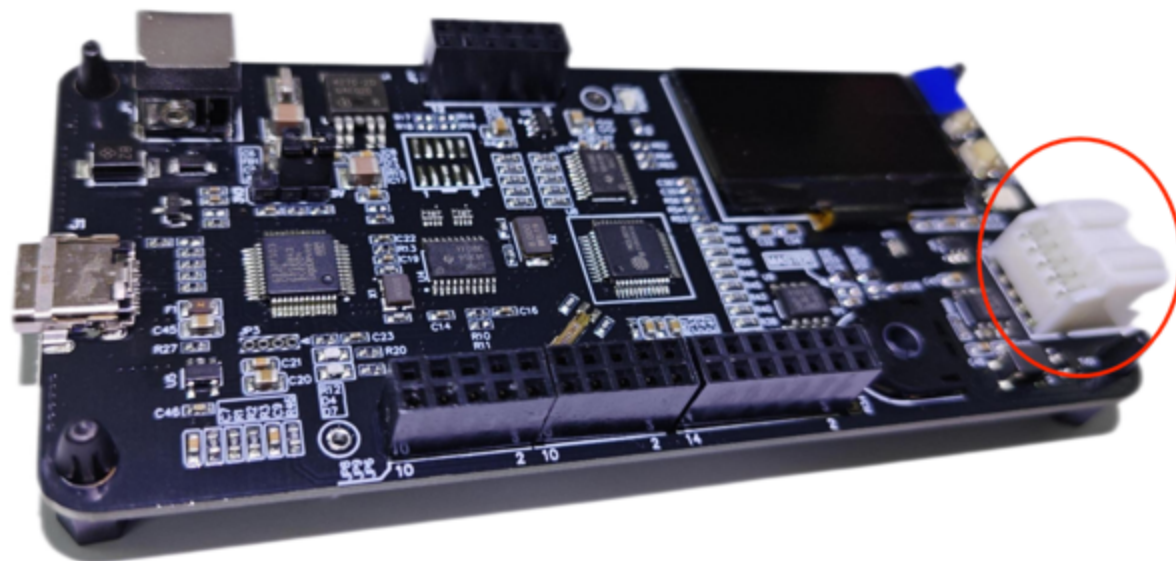


FM33LG0x5A AutoEVB LIN connectors

JP1

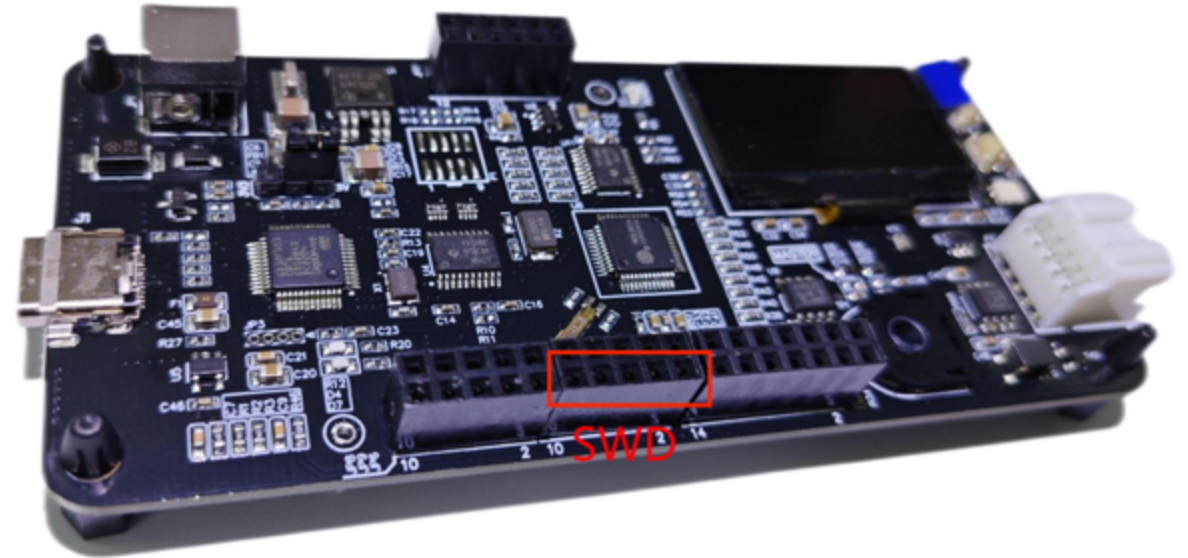
1	3	5	7	9
2	4	6	8	10

- | | |
|--------------|--------------|
| 1、CANH | 2、CANL |
| 3、GND | 4、LIN |
| 5、VBAT | 6、GND |
| 7、LPUART2_RX | 8、LPUART2_TX |
| 9、UART4_RX | 10、UART4_TX |



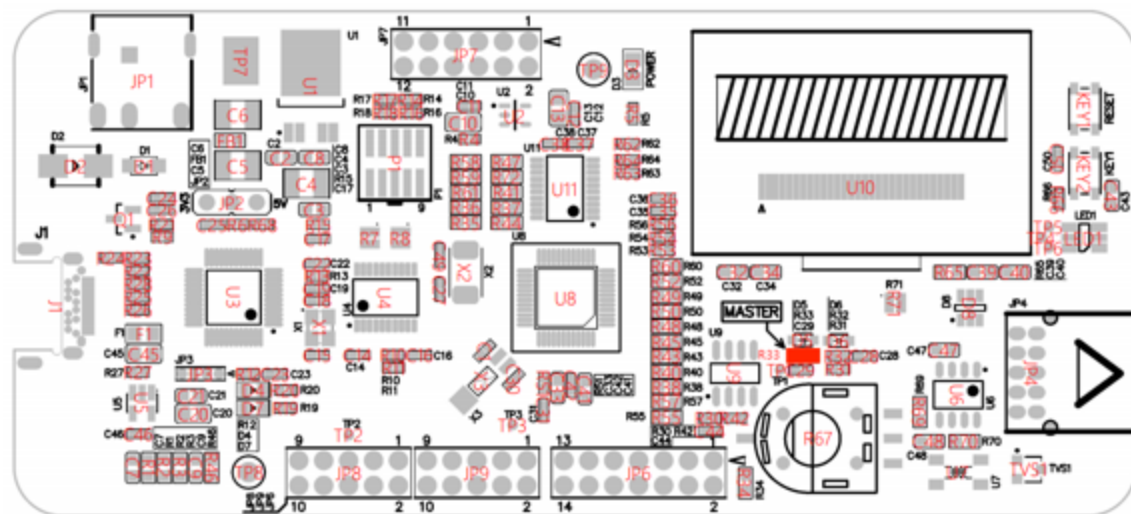
FM33LG0x5A AutoEVB – SWD Debug Connector

5V	GND	nRST	SWIO	SWCLK
VDD	GND	RESET	SWIO	SWCLK



FM33LG0x5A AutoEVB – NC

FM33LG025A AutoEVB通过R33
(0603 0Ω) 切换LIN的主从机模式，
默认不焊接为从机模式。



FM33LG0x5A AutoEVB –User Peripherals

CIRCUIT	PART REFERENCE	SIGNAL NAME	DESCRIPTION
RGB LED	Blue	PB4	User LED
	Green	PB6	User LED
	Red	PB5	User LED
Push Button	KEY1	RESET	User SW. Active HIGH
	KEY2	PB12	User SW. Active HIGH
ADC Potentiometer	R67	PA1	Rotary Potentiometer (0-VDDA)
OLED Display	U10	SPI	User Display
Daplink	J1	SWD	Download
Power	JP1	Power	Power IN

