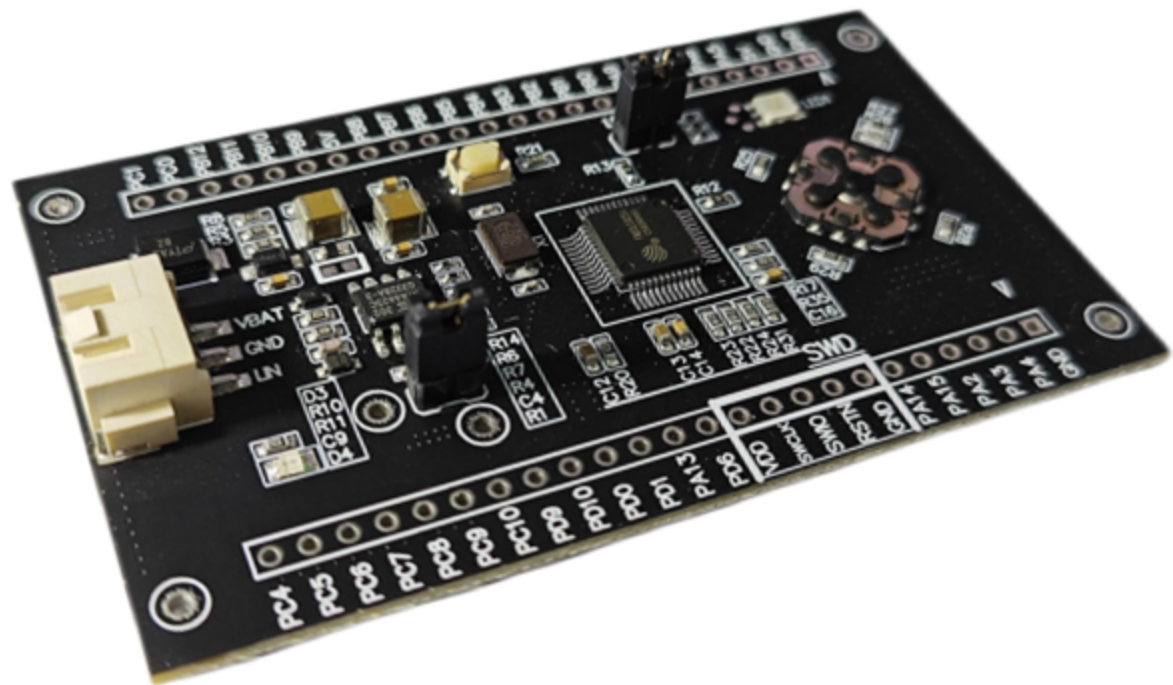


FM33LE0xA AutoEVB UM

FOR FM33LE0x3A
FM33LE0x5A

Date 2023.07.07



上海复旦微电子集团股份有限公司
Shanghai Fudan Microelectronics Group Company Limited

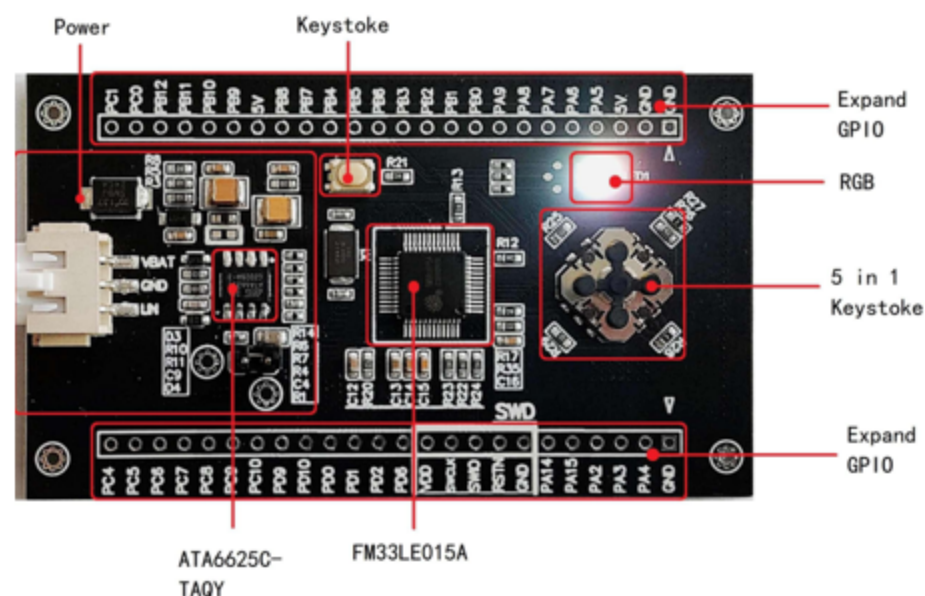
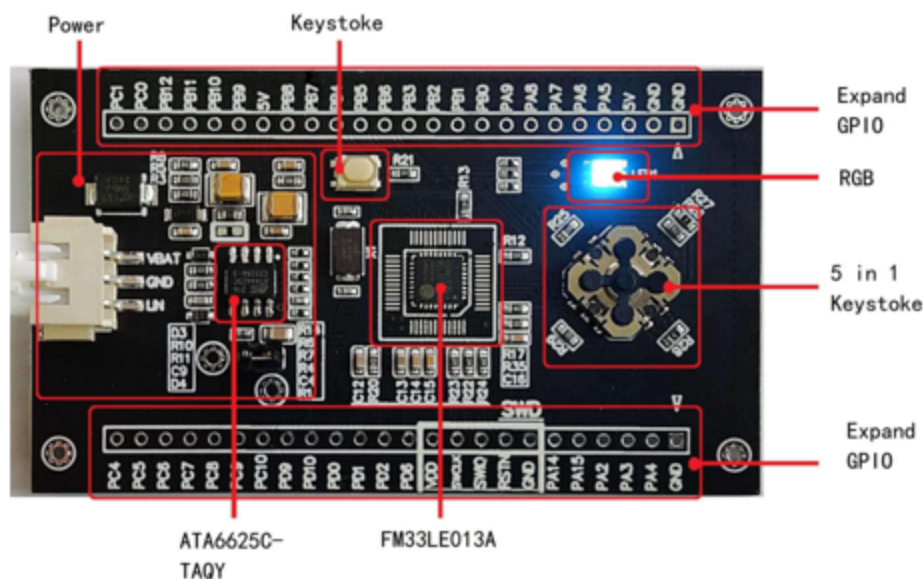
FM33LE0xA AutoEVB Main Features

FM33LE0xA AutoEVB是基于复旦微FM33LE0xA车规芯片的开发平台。

功能包括了所有MCU I/O, Lin总线, 5in1按键, RGB (PWM)。

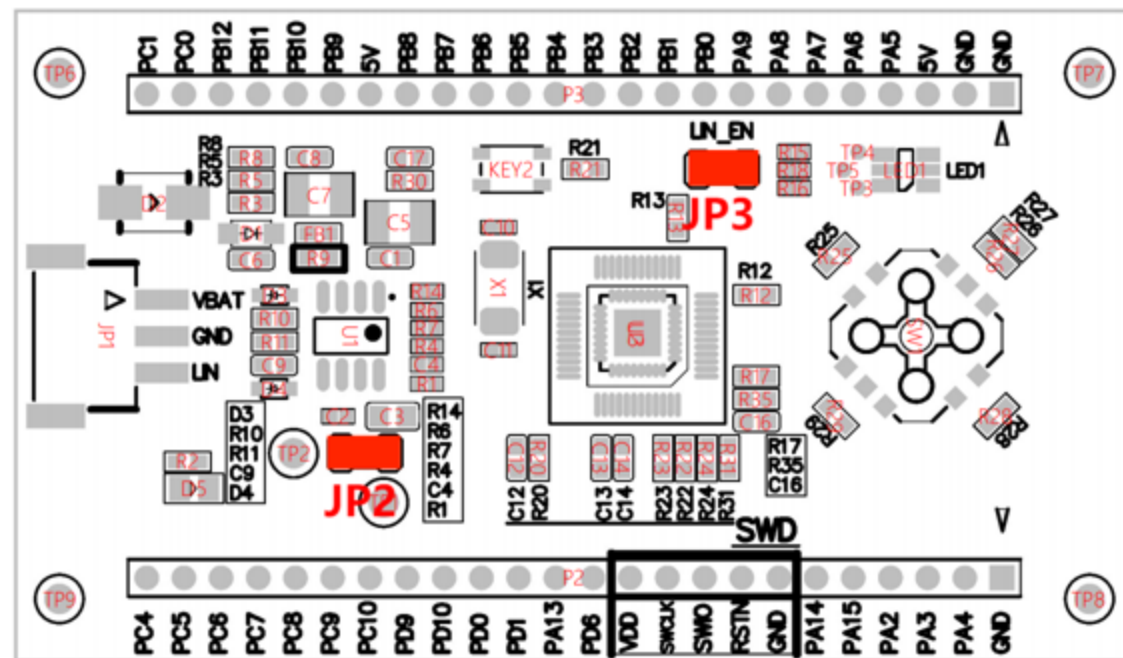
通过外部12V供电, 可通过断开跳线帽MCU的5V供电, 以此测量MCU功耗。

正面丝印为LE0x5A, 背面丝印为LE0x3A。



跳线帽配置

| REFERENCE | POSITION | DESCRIPTION |
|-----------|----------|---------------------------------------|
| JP2 | 1-2 | MCU_5V供电, 可断开后接入 万用表测量 MCU功耗 |
| JP3 | 1-2 | LIN_EN, 可通 过外部输入控 制 |

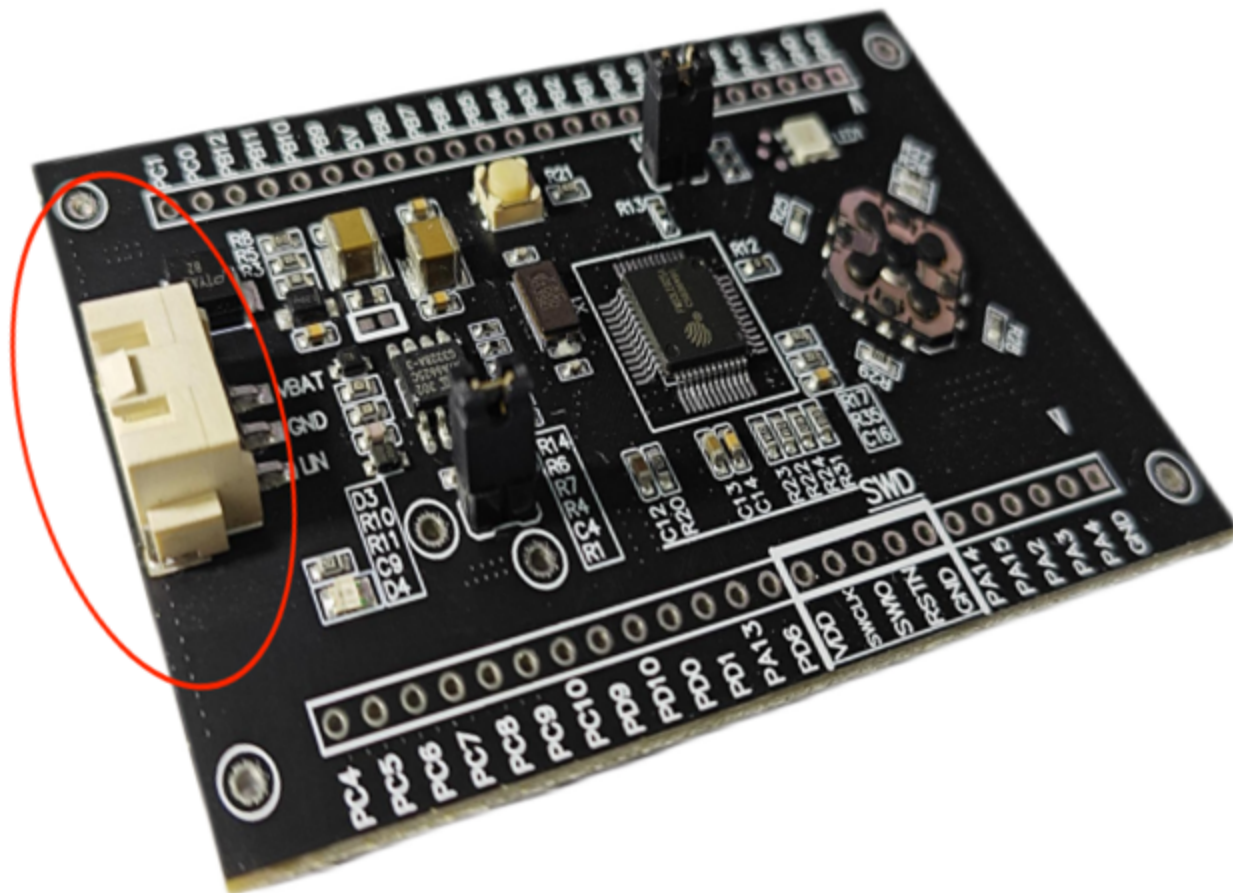


FM33LE0xA AutoEVB LIN connectors

JP1

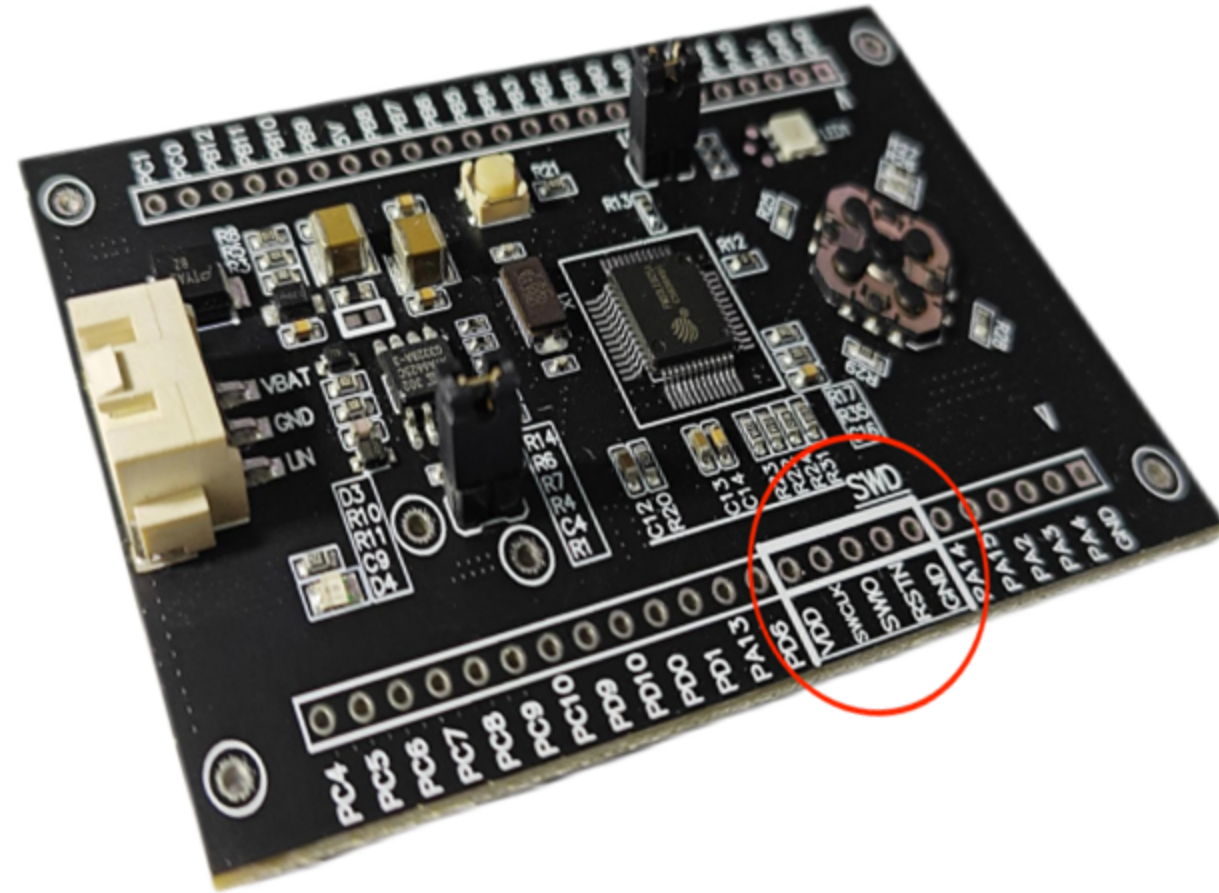
| 1 | 2 | 3 |
|---|---|---|
|---|---|---|

- 1、VBAT (< 40V)
- 2、GND
- 3、LIN



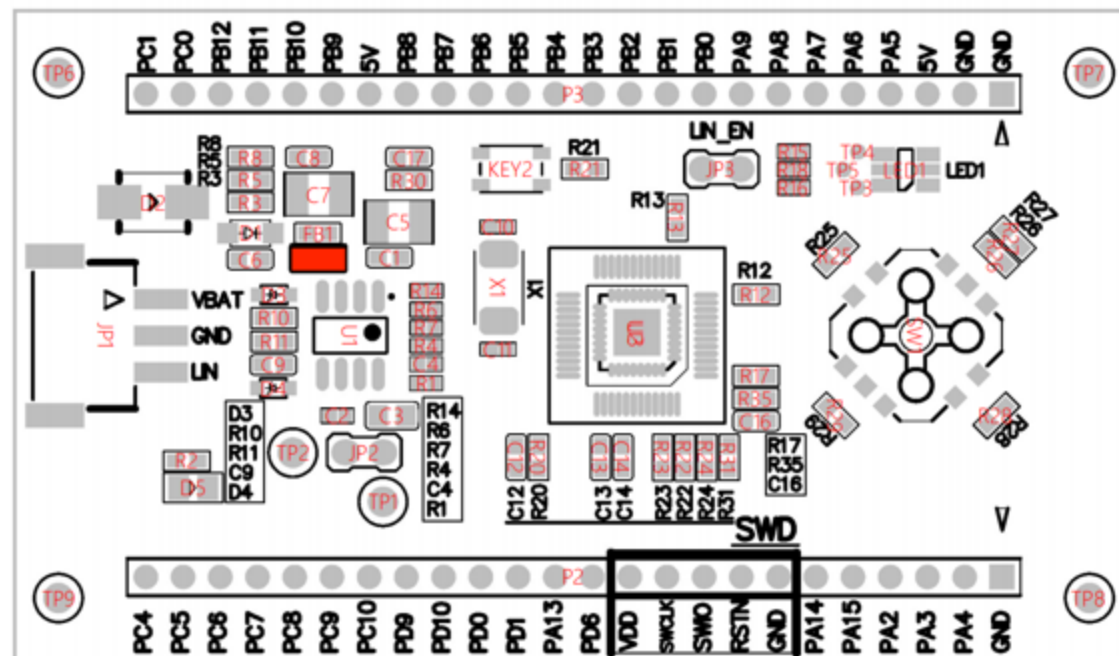
FM33LE0xA AutoEVB – SWD Debug Connector

| VDD | SWCLK | SWIO | RSTN | GND |
|-----|-------|-------|-------|-----|
| 5V | SWCLK | SWDIO | RESET | GND |



FM33LE0xA AutoEVB – NC

FM33LE0xA AutoEVB通过R9 (0603 0Ω) 切换LIN的主从机模式，默认不焊接为从机模式。



FM33LE0xA AutoEVB –User Peripherals

| CIRCUIT | PART REFERENCE | SIGNAL NAME | DESCRIPTION |
|-------------|----------------|-------------|----------------------|
| RGB LED | Blue | PC0 | User LED |
| | Green | PC1 | User LED |
| | Red | PA4 | User LED |
| Push Button | SW1 | PB9 | User SW. Active HIGH |
| | SW2 | PA13 | ADC(0-4.71V) |

