

USB转串口电路

IO口PA0-7 IO口PB0-7

RXD1
TXD1
3
4
5
6
7
8

RXD0
TXD0
11
12
13
14
15
16

17
18
19
20
21
22
23
24

PC0/T12IN1/SEG8/P1.0
PC1/SEG9/AN0/P1.1
PC2/PCACOMP0/SEG10/P1.2
PC3/FOUT1/SEG11/P1.3
PC4/T4IN1/SEG12/P1.4
PC5/T4IN0/SEG13/P1.5
PC6/T3IN1/SEG14/P1.6
PC7/T3IN0/SEG15/P1.7

48
49
50
51
52
53
54
55

XTALOUT
XTALIN
VSS
VDD
VDD15
CPLL
(VESAM)/WKUP4/PH0
(RESET)/TEST_N

FM3316

PD0/PCACAPT1/SEG16
PD1/SEG17/PCACAPT3/WKUP2
PD2/RXD2/PCACOMP2/AN4
PD3/TXD2/PCACOMP3/AN3
PD4/MOSI/T4IN1
PD5/MISO/T4IN0
PD6/SC/T3IN1
PD7/SSN/T3IN0

PE0/7816CLK/P2.0/AN5
PE1/7816IO0/P2.1
PE2/7816IO1/P2.2
PE3/T12IN2/SEG18/P2.3
PE4/T12IN3/SEG19/P2.4
PE5/SEG20/P2.5/SDA
PE6/SEG21/P2.6/SDA
PE7/T1OUT/SEG22/P2.7

PF0/T2OUT/SEG23(SVS1)
PF1/SVS0(VDISP1)/RXD1/IT0IN
PF2/VDISP2/TXD1/IT1IN
PF3/VDISP3/RXD0/IT2IN
PF4/VCIN1/TXD0/IT2CKOUT
PF5/PCAECL/AN2(VICIN2)/FOUT0
PF6/WKUP3

TDI(STROBE)/RXD2/PG0
TMS/TXD2/PG1
TCK(TCLK)/RXD3/PG2
TDO(TDIO)/TXD3/PG3
FOUT0/PCACAPT0/PG4
PCACAPT1/RXD3/PG5
PCACAPT2/TXD3/PG6
PCACOMP4/(VLED)/PG7
PCACOMP1/AN1/PF7

25
26
27
28
29
30
31
32

33
34
35
36
37
38
39
40

41
42
43
44
45
46
47

56
57
58
59
60
61
62
63
64

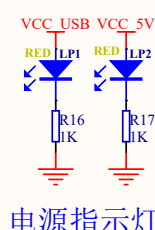
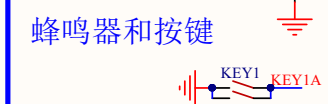
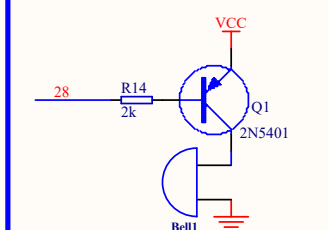
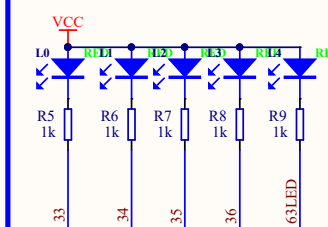
IO口PD0-7

IO口PE0-7

I2C接口需要
外接5.1K上拉

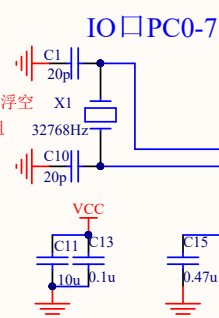
IO口PF0-7

IO口PG0-7

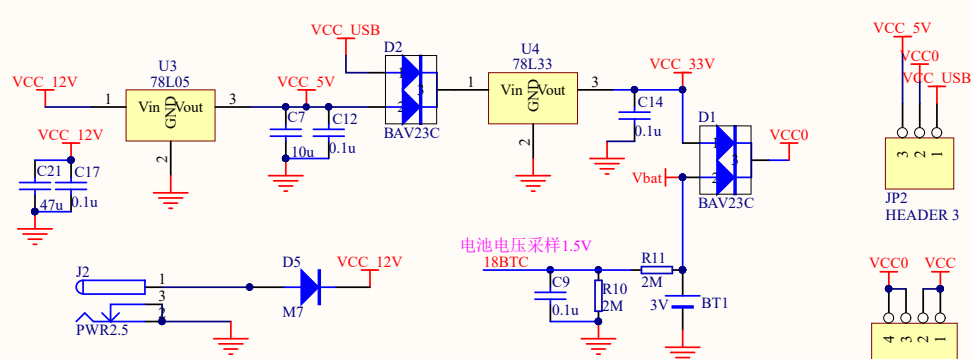


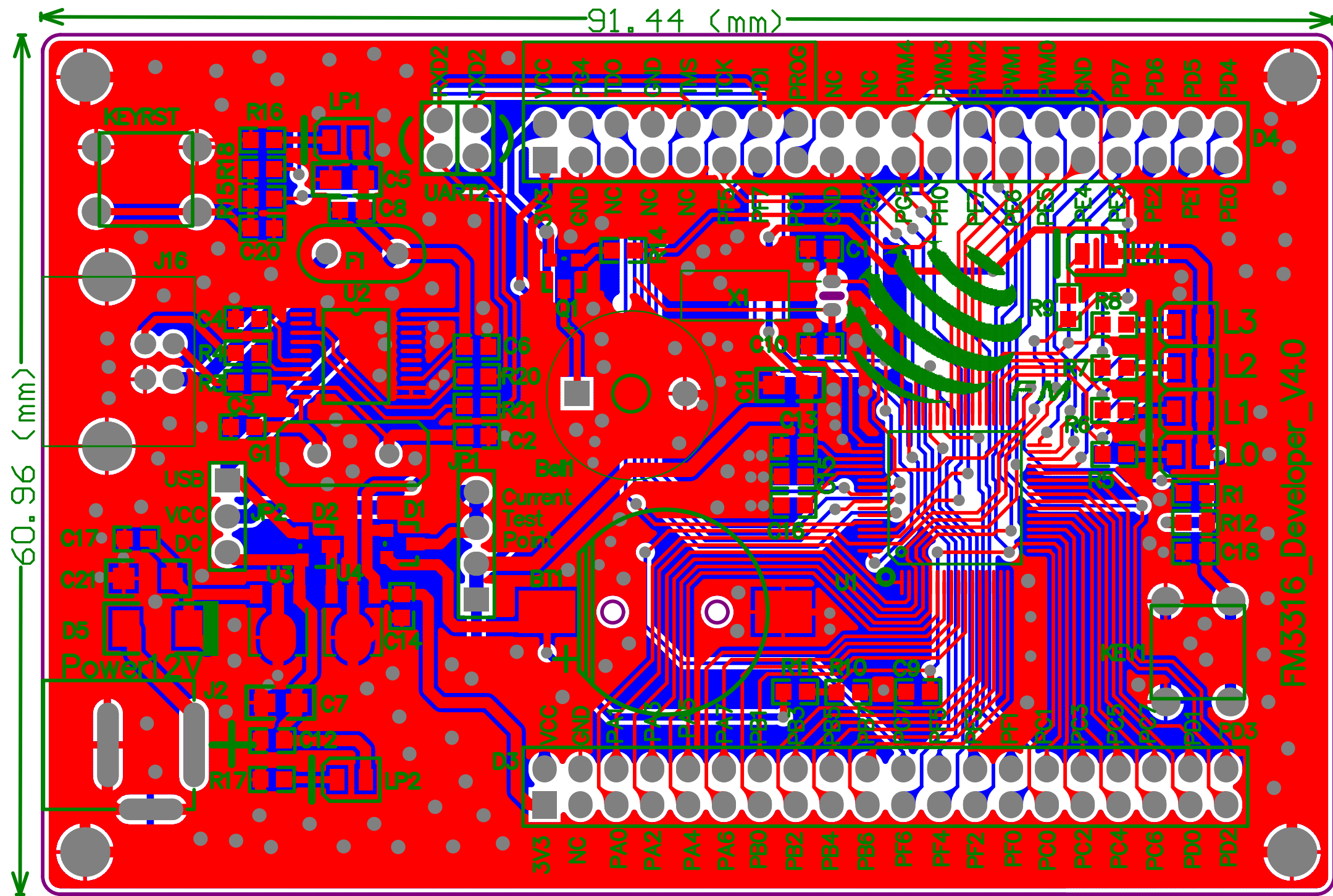
电源指示灯

如果不用晶体,49接地, 48浮空
即C1不焊, C10焊0R电阻



电池切换电源电路





Bill of Materials

<Parameter Title not found>

Source Data From:	FM3316developV4.0.PrjPcb
Project:	FM3316developV4.0.PrjPcb
Variant:	None

Creation Date:	2018/12/1	17:52:14
Print Date:	43435	43435.74498

Footprint	Comment	LibRef	Designator	Description	Quantity
2K1		2K1			1
BELL		BELL	Bell1	Bell	1
DZC	3V	BATTERY1	BT1		1
0603-1	20p	CAPACITOR, C, C, CAPACITOR	C1, C2, C3, C10		4
0603-1	10n	C	C4		1
1206	10u	CAPACITOR	C5		1
0603-1	0.1u	C, CAPACITOR, CAPACITOR, CAPACITOR, CAPACITOR, CAPACITOR, CAPACITOR, CAPACITOR	C6, C8, C9, C12, C13, C14, C17, C18, C20		9
0805	10u	CAPACITOR	C7, C11		2
0603-1	0.47u	CAPACITOR	C15		1
0603-1	2.2nF	CAPACITOR	C16		1
1206	47u	CAPACITOR	C21		1
BAT54C	BAV23C	BAT54C	D1, D2		2
IDC40	IDC40A	IDC40A	D3, D4		2
M7	M7	DIODE	D5	Diode	1
CRC2	100mA	FUSE2	F1	Fuse	1
GT	12MHZ	X	G1		1
POWERJACK	PWR2.5	PWR2.5	J2	Low Voltage Power Supply Connector	1
USB_B	USB	USB_A&B	J16	USB_B_底座	1
SIP4	HEADER 4	4 HEADER	JP1	4 Pin Header	1
SIP3	HEADER 3	HEADER 3	JP2		1
KEY2		D_KEY	KEY1, KEYRST		2
LEDT	RED	LED	L0, L1, L2, L3, L4, LP1, LP2		7
3904_3906	2N5401	Pro89.tmp_2SA812_83	Q1		1
0603-1	100R	RES_S	R1, R18, R20, R21		4
0603-1	10	RES_S	R3, R4		2
0603-1	1k	RES_S	R5, R6, R7, R8, R9, R16, R17		7
0603-1	2M	RES_S	R10, R11		2
0603-1	300k	RES_S	R12, R15		2
0603-1	2k	RES_S	R14		1
LQFP64	FM3316	FM3316	U1		1
SSOP20	CH341T	COMPONENT_20	U2		1
SOT-89	78L05	7805	U3		1
SOT-89	78L33	7805	U4		1
TX_S1	32768Hz	CRYSTAL	X1	Crystal	1
					67

Approved	Notes